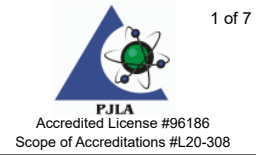




Certificate of Analysis

AZDHS Certification # 05LCMI00301434



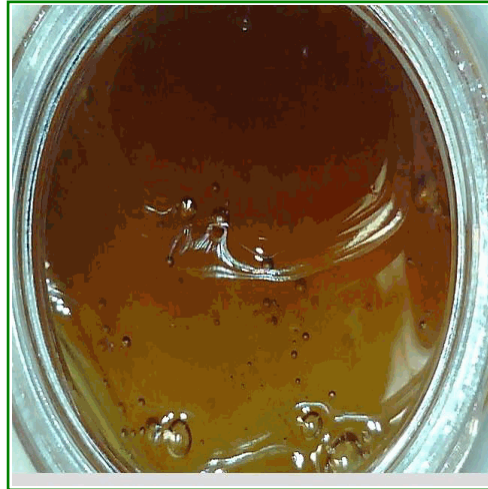
Local Flower
7655 East Evans Road
Scottsdale, AZ 85260
14802625012
Lic#: 00000091DCWY00555666

Sample: S208088-01
CC ID#: 2208C4L0091.4199
Lot#: N/A
Batch#: 7958 6417 8847 3920
Batch Size: N/A

FINAL

Sample Name: Strawberry Candy 4 Live Rosin Fresh Press 08.09.22
Strain Name: Strawberry Candy 4
Matrix: Concentrates Extracts

Sample Received: 08/22/2022
Report Created: 08/31/2022



Potency Results

73.9%	<LOQ%	RATIO	
Total THC	Total CBD	1	0
		THC	CBD

Total THC= THCa * 0.877 + d9-THC
Total CBD= CBDa * 0.877 + CBD

SAFETY

Microbials	Residual Solvents	Mycotoxins	Pesticides	Metals
PASS	PASS	PASS	PASS	PASS



C4 LABORATORIES

7650 E. Evans Rd, Unit A
Scottsdale, AZ 85260
(480) 219-6460
<http://www.c4lab.com>
Lic.#00000005LCMI00301434

Jillian Blaney

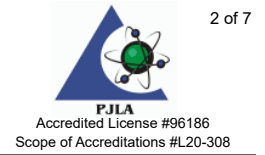
Jillian Blaney
Technical Laboratory Director

This product has been tested by C4 Laboratories LLC using valid testing methodologies and a quality system as required by Arizona state law. Results marked as 'Pass' or 'Fail' are done so in reference to R9-17: Arizona Administrative Code (A.A.C.) Title 9, Chapter 17, May 3, 2021. Values reported relate only to the product tested as received. C4 Laboratories LLC makes no claims as to the efficacy, safety or other risks associated with any detected or non-detected levels of any compounds reported herein. Contact C4 Laboratories LLC for a technical report related to this sample. This Certificate shall not be reproduced except in full, without the written approval of C4 Laboratories LLC. AZDHS certification 00000005LCMI00301434.



Certificate of Analysis

AZDHS Certification # 05LCMI00301434



Local Flower
7655 East Evans Road
Scottsdale, AZ 85260
14802625012
Lic#: 00000091DCWY00555666

Sample: S208088-01
CC ID#: 2208C4L0091.4199
Lot#: N/A
Batch#: 7958 6417 8847 3920
Batch Size: N/A

FINAL

Sample Name: Strawberry Candy 4 Live Rosin Fresh Press 08.09.22
Strain Name: Strawberry Candy 4
Matrix: Concentrates Extracts

Sample Received: 08/22/2022
Report Created: 08/31/2022

Cannabinoids by HPLC - Medical

Date Analyzed: 08/24/2022 Analyst Initials: DRF

Analyte	LOQ	Mass	Mass	Q
	%	%	mg/g	
THCA	1.50	84.3	843.00	
d9-THC	1.50	<LOQ	<LOQ	
d8-THC	1.50	<LOQ	<LOQ	
CBDA	1.50	<LOQ	<LOQ	
CBD	1.50	<LOQ	<LOQ	M1
CBG	1.50	<LOQ	<LOQ	
CBN	1.50	<LOQ	<LOQ	
CBC	1.50	<LOQ	<LOQ	
Total Cannabinoids	1.50	84.3	843.00	
Total THC	1.50	73.9	739.00	
Total CBD	1.50	<LOQ	<LOQ	

Total THC= THCa * 0.877 + d9-THC. Total CBD= CBDA * 0.877 + CBD.
LOQ = Limit of Quantitation; NR = Not Reported; ND = Not Detected.
Unless otherwise stated all quality control samples performed within specifications established by the Laboratory.
Cannabinoids method: HPLC-DAD.

Terpenes by GC-FID- Commercial

Date Analyzed: 08/29/2022 Analyst Initials: SML

Analyte	LOQ	Mass	Mass	Q
	%	%	mg/g	
beta-Myrcene	0.074	1.71	17.10	Q3
Limonene	0.074	1.44	14.40	Q3
beta-Caryophyllene	0.074	0.841	8.41	Q3
beta-Pinene	0.074	0.442	4.42	Q3
Guaiol	0.074	0.306	3.06	Q3
alpha-Humulene	0.074	0.251	2.51	Q3
alpha-Pinene	0.074	0.230	2.30	Q3
Linalool	0.074	0.218	2.18	Q3
Camphene	0.074	0.089	0.89	Q3
p-Cymene	0.074	<LOQ	<LOQ	Q3
gamma-Terpinene	0.074	<LOQ	<LOQ	Q3
Caryophyllene Oxide	0.074	<LOQ	<LOQ	Q3
Eucalyptol	0.074	<LOQ	<LOQ	Q3
alpha-Bisabolol	0.074	<LOQ	<LOQ	Q3
cis-Nerolidol	0.074	<LOQ	<LOQ	Q3
Geraniol	0.074	<LOQ	<LOQ	Q3
Isopulegol	0.074	<LOQ	<LOQ	Q3
Terpinolene	0.074	<LOQ	<LOQ	Q3
Ocimene	0.074	<LOQ	<LOQ	Q3
alpha-Terpinene	0.074	<LOQ	<LOQ	Q3
3-Carene	0.074	<LOQ	<LOQ	Q3
Total Terpenes		5.527	55.27	

LOQ = Limit of Quantitation; NR = Not Reported; ND = Not Detected.
Terpene results are provided for informational purposes only.
Unless otherwise stated all quality control samples performed within specifications established by the Laboratory.



C4 LABORATORIES

7650 E. Evans Rd, Unit A
Scottsdale, AZ 85260
(480) 219-6460
<http://www.c4lab.com>
Lic.#00000005LCMI00301434

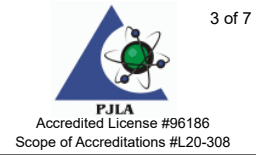
Jillian Blaney
Technical Laboratory Director

This product has been tested by C4 Laboratories LLC using valid testing methodologies and a quality system as required by Arizona state law. Results marked as 'Pass' or 'Fail' are done so in reference to R9-17: Arizona Administrative Code (A.A.C.) Title 9, Chapter 17, May 3, 2021. Values reported relate only to the product tested as received. C4 Laboratories LLC makes no claims as to the efficacy, safety or other risks associated with any detected or non-detected levels of any compounds reported herein. Contact C4 Laboratories LLC for a technical report related to this sample. This Certificate shall not be reproduced except in full, without the written approval of C4 Laboratories LLC. AZDHS certification 00000005LCMI00301434.



Certificate of Analysis

AZDHS Certification # 05LCMI00301434



Local Flower
7655 East Evans Road
Scottsdale, AZ 85260
14802625012
Lic#: 00000091DCWY00555666

Sample: S208088-01
CC ID#: 2208C4L0091.4199
Lot#: N/A
Batch#: 7958 6417 8847 3920
Batch Size: N/A

FINAL

Sample Name: Strawberry Candy 4 Live Rosin Fresh Press 08.09.22
Strain Name: Strawberry Candy 4
Matrix: Concentrates Extracts

Sample Received: 08/22/2022
Report Created: 08/31/2022

Pesticides by LCMSMS - Medical

Pass

Date Analyzed: 08/25/2022 Analyst Initials: EXP

Analyte	LOQ	Limit	Units	Q	Status	Analyte	LOQ	Limit	Units	Q	Status
	ppm	ppm	ppm				ppm	ppm	ppm		
Abamectin	0.119	0.5	<LOQ		Pass	Hexythiazox	0.252	1.0	<LOQ	M2	Pass
Acephate	0.101	0.4	<LOQ		Pass	Imazalil	0.101	0.2	<LOQ		Pass
Acequinocyl	0.503	2.0	<LOQ		Pass	Imidacloprid	0.101	0.4	<LOQ		Pass
Acetamiprid	0.050	0.2	<LOQ		Pass	Kresoxim-methyl	0.101	0.4	<LOQ	M2	Pass
Aldicarb	0.101	0.4	<LOQ		Pass	Malathion	0.050	0.2	<LOQ		Pass
Azoxystrobin	0.050	0.2	<LOQ		Pass	Metalaxyl	0.101	0.2	<LOQ		Pass
Bifenazate	0.050	0.2	<LOQ		Pass	Methiocarb	0.050	0.2	<LOQ	M2	Pass
Bifenthrin	0.050	0.2	<LOQ	M2	Pass	Methomyl	0.101	0.4	<LOQ		Pass
Boscalid	0.101	0.4	<LOQ	M2	Pass	Myclobutanil	0.050	0.2	<LOQ		Pass
Carbaryl	0.050	0.2	<LOQ		Pass	Naled	0.126	0.5	<LOQ		Pass
Carbofuran	0.050	0.2	<LOQ		Pass	Oxamyl	0.252	1.0	<LOQ		Pass
Chlorantraniliprole	0.050	0.2	<LOQ		Pass	Paclobutrazol	0.101	0.4	<LOQ	M2	Pass
Chlorfenapyr	0.503	1.0	<LOQ	M2	Pass	Permethrins	0.050	0.2	<LOQ	M2	Pass
Chlorpyrifos	0.050	0.2	<LOQ	M2	Pass	Phosmet	0.050	0.2	<LOQ		Pass
Clofentezine	0.050	0.2	<LOQ	M2	Pass	Piperonyl butoxide	0.503	2.0	<LOQ	M2	Pass
Cyfluthrin	0.503	1.0	<LOQ	V1	Pass	Prallethrin	0.101	0.2	<LOQ		Pass
Cypermethrin	0.252	1.0	<LOQ	M2	Pass	Propiconazole	0.101	0.4	<LOQ		Pass
Daminozide	0.503	1.0	<LOQ		Pass	Propoxur	0.050	0.2	<LOQ		Pass
Diazinon	0.050	0.2	<LOQ	M2	Pass	Pyrethrins	0.316	1.0	<LOQ	M2	Pass
Dichlorvos	0.050	0.1	<LOQ		Pass	Pyridaben	0.050	0.2	<LOQ	M2	Pass
Dimethoate	0.050	0.2	<LOQ		Pass	Spinosad	0.050	0.2	<LOQ	M2	Pass
Ethoprophos	0.050	0.2	<LOQ		Pass	Spiromesifen	0.050	0.2	<LOQ		Pass
Etofenprox	0.101	0.4	<LOQ		Pass	Spirotetramat	0.050	0.2	<LOQ		Pass
Etoxazole	0.050	0.2	<LOQ		Pass	Spiroxamine	0.101	0.4	<LOQ		Pass
Fenoxycarb	0.050	0.2	<LOQ	M2	Pass	Tebuconazole	0.101	0.4	<LOQ	V1	Pass
Fenpyroximate	0.101	0.4	<LOQ	M2	Pass	Thiacloprid	0.050	0.2	<LOQ		Pass
Fipronil	0.101	0.4	<LOQ	L1, M1, V1	Pass	Thiamethoxam	0.050	0.2	<LOQ		Pass
Flonicamid	0.252	1.0	<LOQ		Pass	Trifloxystrobin	0.050	0.2	<LOQ	M2	Pass
Fludioxonil	0.101	0.4	<LOQ		Pass						

LOQ = Limit of Quantitation; NR = Not Reported; ND = Not Detected. Unless otherwise stated all quality control samples performed within specifications established by the Laboratory. Pesticides method: LC/MS/MS.



C4 LABORATORIES

7650 E. Evans Rd, Unit A
Scottsdale, AZ 85260
(480) 219-6460
<http://www.c4lab.com>
Lic.#00000005LCMI00301434

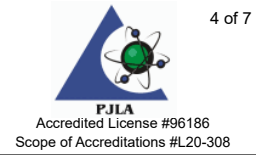
Jillian Blaney
Technical Laboratory Director

This product has been tested by C4 Laboratories LLC using valid testing methodologies and a quality system as required by Arizona state law. Results marked as 'Pass' or 'Fail' are done so in reference to R9-17: Arizona Administrative Code (A.A.C.) Title 9, Chapter 17, May 3, 2021. Values reported relate only to the product tested as received. C4 Laboratories LLC makes no claims as to the efficacy, safety or other risks associated with any detected or non-detected levels of any compounds reported herein. Contact C4 Laboratories LLC for a technical report related to this sample. This Certificate shall not be reproduced except in full, without the written approval of C4 Laboratories LLC. AZDHS certification 00000005LCMI00301434.



Certificate of Analysis

AZDHS Certification # 05LCMI00301434



Local Flower
 7655 East Evans Road
 Scottsdale, AZ 85260
 14802625012
 Lic#: 00000091DCWY00555666

Sample: S208088-01
 CC ID#: 2208C4L0091.4199
 Lot#: N/A
 Batch#: 7958 6417 8847 3920
 Batch Size: N/A

FINAL

Sample Name: Strawberry Candy 4 Live Rosin Fresh Press 08.09.22
Strain Name: Strawberry Candy 4
Matrix: Concentrates Extracts

Sample Received: 08/22/2022
Report Created: 08/31/2022

Metals by ICPMS - Medical Pass

Date Analyzed: 08/23/2022 Analyst Initials: IAM

Analyte	LOQ	Limit	Mass	Q	Status
	ppm	ppm	ppm		
Arsenic	0.099	0.405	<LOQ		Pass
Cadmium	0.099	0.405	<LOQ		Pass
Lead	0.395	1.05	<LOQ		Pass
Mercury	0.395	1.25	<LOQ		Pass

LOQ = Limit of Quantitation; ND = Not Detected. Unless otherwise stated all quality control samples performed within specifications established by the Laboratory.

Mycotoxins by ELISA- Medical Pass

Date Analyzed: 08/23/2022 Analyst Initials: BAB

Analyte	LOQ	Limit	Mass	Q	Status
	ppb	ppb	ppb		
Aflatoxins Total	2.00	20	<LOQ		Pass
Ochratoxin A	4.00	20	<LOQ		Pass

LOQ = Limit of Quantitation; NR = Not Reported; ND = Not Detected. Unless otherwise stated all quality control samples performed within specifications established by the Laboratory. Total Aflatoxins includes Aflatoxins B1, B2, G1, and G2.



C4 LABORATORIES

7650 E. Evans Rd, Unit A
 Scottsdale, AZ 85260
 (480) 219-6460
<http://www.c4lab.com>
 Lic.#00000005LCMI00301434

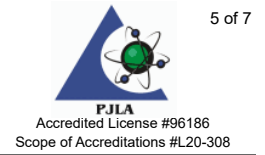
Jillian Blaney
 Technical Laboratory Director

This product has been tested by C4 Laboratories LLC using valid testing methodologies and a quality system as required by Arizona state law. Results marked as 'Pass' or 'Fail' are done so in reference to R9-17: Arizona Administrative Code (A.A.C.) Title 9, Chapter 17, May 3, 2021. Values reported relate only to the product tested as received. C4 Laboratories LLC makes no claims as to the efficacy, safety or other risks associated with any detected or non-detected levels of any compounds reported herein. Contact C4 Laboratories LLC for a technical report related to this sample. This Certificate shall not be reproduced except in full, without the written approval of C4 Laboratories LLC. AZDHS certification 00000005LCMI00301434.



Certificate of Analysis

AZDHS Certification # 05LCMI00301434



Local Flower
7655 East Evans Road
Scottsdale, AZ 85260
14802625012
Lic#: 00000091DCWY00555666

Sample: S208088-01
CC ID#: 2208C4L0091.4199
Lot#: N/A
Batch#: 7958 6417 8847 3920
Batch Size: N/A

FINAL

Sample Name: Strawberry Candy 4 Live Rosin Fresh Press 08.09.22
Strain Name: Strawberry Candy 4
Matrix: Concentrates Extracts

Sample Received: 08/22/2022
Report Created: 08/31/2022

Microbials **Pass**

E. coli by 3M Petrifilm- Medical

Plate

Date Analyzed: 08/24/2022 Analyst Initials: KAM

Analyte	LOQ	Limit	Mass	Q	Status
	cfu/g	cfu/g	cfu/g		
E. coli	10	100	<LOQ		Pass

Notes: Aerobic plate counts and yeast and mold are provided for informational purposes only.
LOQ = Limit of Quantitation; TNTC = Too Numerous to Count; NR = Not Reported; NT = Not Tested;
ND = Not Detected; Unless otherwise stated all quality control samples performed within specifications established by the Laboratory. Aspergillus includes species flavus, fumigatus, niger, and terreus.
E. coli by Petrifilm, Salmonella and Aspergillus by Medicinal Genomics.

Aspergillus and Salmonella by qPCR - Medical

qPCR

Date Analyzed: 08/24/2022 Analyst Initials: KAM

Analyte	Mass	Q	Status
Salmonella spp.	Not Detected		Pass
Aspergillus	Not Detected		Pass

Notes: Aerobic plate counts and yeast and mold are provided for informational purposes only.
LOQ = Limit of Quantitation; TNTC = Too Numerous to Count; NR = Not Reported; NT = Not Tested;
ND = Not Detected; Unless otherwise stated all quality control samples performed within specifications established by the Laboratory. Aspergillus includes species flavus, fumigatus, niger, and terreus.
E. coli by Petrifilm, Salmonella and Aspergillus by Medicinal Genomics.



C4 LABORATORIES

7650 E. Evans Rd, Unit A
Scottsdale, AZ 85260
(480) 219-6460
<http://www.c4lab.com>
Lic.#00000005LCMI00301434

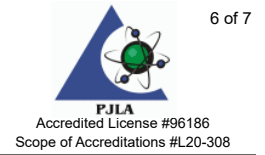
Jillian Blaney
Technical Laboratory Director

This product has been tested by C4 Laboratories LLC using valid testing methodologies and a quality system as required by Arizona state law. Results marked as 'Pass' or 'Fail' are done so in reference to R9-17: Arizona Administrative Code (A.A.C.) Title 9, Chapter 17, May 3, 2021. Values reported relate only to the product tested as received. C4 Laboratories LLC makes no claims as to the efficacy, safety or other risks associated with any detected or non-detected levels of any compounds reported herein. Contact C4 Laboratories LLC for a technical report related to this sample. This Certificate shall not be reproduced except in full, without the written approval of C4 Laboratories LLC. AZDHS certification 00000005LCMI00301434.



Certificate of Analysis

AZDHS Certification # 05LCMI00301434



Local Flower
7655 East Evans Road
Scottsdale, AZ 85260
14802625012
Lic#: 00000091DCWY00555666

Sample: S208088-01
CC ID#: 2208C4L0091.4199
Lot#: N/A
Batch#: 7958 6417 8847 3920
Batch Size: N/A

FINAL

Sample Name: Strawberry Candy 4 Live Rosin Fresh Press 08.09.22
Strain Name: Strawberry Candy 4
Matrix: Concentrates Extracts

Sample Received: 08/22/2022
Report Created: 08/31/2022

Residual Solvents by Headspace GCMS - Medical

Pass

Date Analyzed: 08/23/2022 Analyst Initials: SML

Analyte	LOQ	Limit	Units	Q	Status	Analyte	LOQ	Limit	Units	Q	Status
	ppm	ppm	ppm				ppm	ppm	ppm		
Acetone	111	1000	<LOQ		Pass	2,3-Dimethylbutane	35.6		<LOQ		
Acetonitrile	44.4	410	<LOQ	L1	Pass	2-Propanol (IPA)	556	5000	<LOQ		Pass
Benzene	0.6	2	<LOQ	L1, V1	Pass	Isopropyl acetate	556	5000	<LOQ		Pass
Butanes	556	5000	<LOQ		Pass	Methanol	333	3000	<LOQ		Pass
n-Butane	556		<LOQ			Pentanes	556	5000	<LOQ		Pass
iso-Butane	556		<LOQ			n-Pentane	556		<LOQ		
Chloroform	13.3	60	<LOQ		Pass	iso-pentane	556		<LOQ		
Dichloromethane	66.7	600	<LOQ		Pass	neo-Pentane	556		<LOQ		
Ethanol	556	5000	<LOQ		Pass	Propane	556	5000	<LOQ		Pass
Ethyl acetate	556	5000	<LOQ		Pass	Toluene	102	890	<LOQ		Pass
Diethyl Ether	556	5000	<LOQ		Pass	Xylenes	244	2170	<LOQ		Pass
n-Heptane	556	5000	<LOQ		Pass	m/p-Xylene	489		<LOQ		
Hexanes	35.6	290	<LOQ		Pass	o-Xylene	244		<LOQ		
n-Hexane	35.6		<LOQ			Ethyl benzene	244		<LOQ		
2-Methylpentane	35.6		<LOQ								
3-Methylpentane	35.6		<LOQ								
2,2-Dimethylbutane	35.6		<LOQ								

LOQ = Limit of Quantitation; ND = Not Detected;
Unless otherwise stated all quality control samples performed within specifications established by the Laboratory.
Solvents method: GC/MS



C4 LABORATORIES

7650 E. Evans Rd, Unit A
Scottsdale, AZ 85260
(480) 219-6460
<http://www.c4lab.com>
Lic.#0000005LCMI00301434

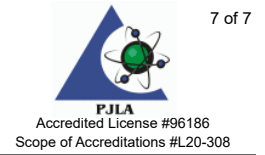
Jillian Blaney
Technical Laboratory Director

This product has been tested by C4 Laboratories LLC using valid testing methodologies and a quality system as required by Arizona state law. Results marked as 'Pass' or 'Fail' are done so in reference to R9-17: Arizona Administrative Code (A.A.C.) Title 9, Chapter 17, May 3, 2021. Values reported relate only to the product tested as received. C4 Laboratories LLC makes no claims as to the efficacy, safety or other risks associated with any detected or non-detected levels of any compounds reported herein. Contact C4 Laboratories LLC for a technical report related to this sample. This Certificate shall not be reproduced except in full, without the written approval of C4 Laboratories LLC. AZDHS certification 0000005LCMI00301434.



Certificate of Analysis

AZDHS Certification # 05LCMI00301434



Local Flower
 7655 East Evans Road
 Scottsdale, AZ 85260
 14802625012
 Lic#: 00000091DCWY00555666

FINAL

Sample: S208088-01
 CC ID#: 2208C4L0091.4199
 Lot#: N/A
 Batch#: 7958 6417 8847 3920
 Batch Size: N/A

Sample Name: Strawberry Candy 4 Live Rosin Fresh Press 08.09.22
Strain Name: Strawberry Candy 4
Matrix: Concentrates Extracts

Sample Received: 08/22/2022
Report Created: 08/31/2022

Notes and Definitions

Item	Definition
I1	Interference. Relative intensity of a characteristic ion in the sample analyte exceeded 30% of the relative intensity in the reference spectrum.
L1	The percent recovery of the LCS was above the control limit for the test but analyte was not detected above the Action Limit in Table 3.1.
M1	Matrix Spike recovery was higher than control limit but recovery of the LCS was within control limits.
M2	Matrix Spike recovery was lower than control limit but recovery of the LCS was within control limits.
Q3	Testing result is for informational purposes only and cannot be used to satisfy dispensary testing requirements in R9-17-317.01(A) or labeling requirements in R9-17-317. Testing result is not accredited under ISO 17025.
V1	CCV recovery exceeded control limits but the sample analyte concentration was below maximum allowable concentrations in table 3.1
ND	Analyte NOT DETECTED at or above the reporting limit.
RPD	Relative Percent Difference
%REC	Percent Recovery
Source	Sample that was matrix spiked or duplicated.



C4 LABORATORIES

7650 E. Evans Rd, Unit A
 Scottsdale, AZ 85260
 (480) 219-6460
<http://www.c4lab.com>
 Lic.#00000005LCMI00301434

Jillian Blaney
 Technical Laboratory Director

This product has been tested by C4 Laboratories LLC using valid testing methodologies and a quality system as required by Arizona state law. Results marked as 'Pass' or 'Fail' are done so in reference to R9-17: Arizona Administrative Code (A.A.C.) Title 9, Chapter 17, May 3, 2021. Values reported relate only to the product tested as received. C4 Laboratories LLC makes no claims as to the efficacy, safety or other risks associated with any detected or non-detected levels of any compounds reported herein. Contact C4 Laboratories LLC for a technical report related to this sample. This Certificate shall not be reproduced except in full, without the written approval of C4 Laboratories LLC. AZDHS certification 00000005LCMI00301434.