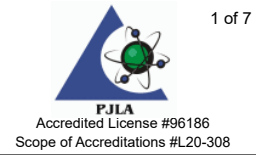




Certificate of Analysis

AZDHS Certification # 05LCMI00301434



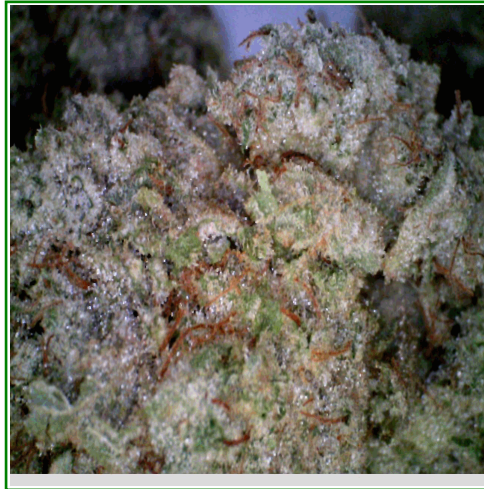
Tierra Grow Management LLC
 none
 cave creek, AZ 85331
 (480) 471-8633
 Lic#: 00000127DCSS00185167

Sample: S111016-01
 CC ID#: 2111C4L0021.5513
 Lot#: BBW1-033121R9-10-13A
 Batch#: BBW1-033121R9-10-13A
 Batch Size: N/A

FINAL

Sample Name: BBW1-033121R9-10-13A
 Strain Name: Blueberry Widow
 Matrix: Flower

Sample Received: 11/04/2021
 Report Created: 11/11/2021



Potency Results

22.8%	<LOQ%	RATIO	
Total THC	Total CBD	1	0
		THC	CBD

Total THC= THCa * 0.877 + d9-THC
 Total CBD= CBDa * 0.877 + CBD

SAFETY

Microbials	Residual Solvents	Mycotoxins	Pesticides	Herbicide	Metals
PASS	NOT TESTED	NOT TESTED	PASS	NOT TESTED	PASS



C4 LABORATORIES

7650 E. Evans Rd, Unit A
 Scottsdale, AZ 85260
 (480) 219-6460
<http://www.c4lab.com>
 Lic.#00000005LCMI00301434

Dennis Wells
 CSO/QAM



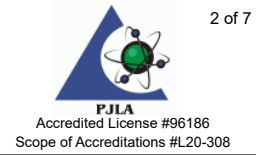
ARIZONA DEPARTMENT
 OF HEALTH SERVICES

This product has been tested by C4 Laboratories LLC using valid testing methodologies and a quality system as required by Arizona state law. Results marked as 'Pass' or 'Fail' are done so in reference to R9-17: Arizona Administrative Code (A.A.C.) Title 9, Chapter 17, May 3, 2021. Values reported relate only to the product tested as received. C4 Laboratories LLC makes no claims as to the efficacy, safety or other risks associated with any detected or non-detected levels of any compounds reported herein. Contact C4 Laboratories LLC for a technical report related to this sample. This Certificate shall not be reproduced except in full, without the written approval of C4 Laboratories LLC. AZDHS certification 00000005LCMI00301434.



Certificate of Analysis

AZDHS Certification # 05LCMI00301434



Tierra Grow Management LLC

Sample: S111016-01

none
cave creek, AZ 85331
(480) 471-8633
Lic#: 00000127DCSS00185167

CC ID#: 2111C4L0021.5513
Lot#: BBW1-033121R9-10-13A
Batch#: BBW1-033121R9-10-13A
Batch Size: N/A

FINAL

Sample Name: BBW1-033121R9-10-13A

Sample Received: 11/04/2021
Report Created: 11/11/2021

Strain Name: Blueberry Widow

Matrix: Flower

Cannabinoids by HPLC - Medical

Date Analyzed: 11/08/2021 Analyst Initials: KWT

Analyte	LOQ	Mass	Mass	Q
	%	%	mg/g	
THCA	0.402	25.0	250.00	
d9-THC	0.402	0.846	8.46	
d8-THC	0.402	<LOQ	<LOQ	
CBDA	0.402	<LOQ	<LOQ	
CBD	0.402	<LOQ	<LOQ	
CBG	0.402	<LOQ	<LOQ	
CBN	0.402	<LOQ	<LOQ	
CBC	0.402	<LOQ	<LOQ	
Total Cannabinoids	0.402	25.9	259.00	
Total THC	0.402	22.8	228.00	
Total CBD	0.402	<LOQ	<LOQ	

Total THC= THCa * 0.877 + d9-THC. Total CBD= CBDA * 0.877 + CBD.
LOQ = Limit of Quantitation; NR = Not Reported; ND = Not Detected.
Unless otherwise stated all quality control samples performed within specifications established by the Laboratory.
Cannabinoids method: HPLC-DAD.



C4 LABORATORIES

7650 E. Evans Rd, Unit A
Scottsdale, AZ 85260
(480) 219-6460
<http://www.c4lab.com>
Lic.#00000005LCMI00301434

Dennis Wells
CSO/QAM

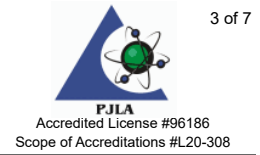


This product has been tested by C4 Laboratories LLC using valid testing methodologies and a quality system as required by Arizona state law. Results marked as 'Pass' or 'Fail' are done so in reference to R9-17: Arizona Administrative Code (A.A.C.) Title 9, Chapter 17, May 3, 2021. Values reported relate only to the product tested as received. C4 Laboratories LLC makes no claims as to the efficacy, safety or other risks associated with any detected or non-detected levels of any compounds reported herein. Contact C4 Laboratories LLC for a technical report related to this sample. This Certificate shall not be reproduced except in full, without the written approval of C4 Laboratories LLC. AZDHS certification 00000005LCMI00301434.



Certificate of Analysis

AZDHS Certification # 05LCMI00301434



Tierra Grow Management LLC
 none
 cave creek, AZ 85331
 (480) 471-8633
 Lic#: 00000127DCSS00185167

Sample: S111016-01
 CC ID#: 2111C4L0021.5513
 Lot#: BBW1-033121R9-10-13A
 Batch#: BBW1-033121R9-10-13A
 Batch Size: N/A

FINAL

Sample Name: BBW1-033121R9-10-13A
 Strain Name: Blueberry Widow
 Matrix: Flower

Sample Received: 11/04/2021
 Report Created: 11/11/2021

Pesticides by LCMSMS - Medical

Pass

Date Analyzed: 11/11/2021 Analyst Initials: JCB

Analyte	LOQ	Limit	Units	Q	Status	Analyte	LOQ	Limit	Units	Q	Status
	ppm	ppm	ppm				ppm	ppm	ppm		
Abamectin	0.122	0.5	<LOQ		Pass	Hexythiazox	0.253	1.0	<LOQ		Pass
Acephate	0.101	0.4	<LOQ		Pass	Imazalil	0.051	0.2	<LOQ		Pass
Acequinocyl	0.507	2.0	<LOQ		Pass	Imidacloprid	0.101	0.4	<LOQ		Pass
Acetamiprid	0.051	0.2	<LOQ		Pass	Kresoxim-methyl	0.101	0.4	<LOQ		Pass
Aldicarb	0.101	0.4	<LOQ		Pass	Malathion	0.051	0.2	<LOQ		Pass
Azoxystrobin	0.051	0.2	<LOQ		Pass	Metaxyl	0.051	0.2	<LOQ		Pass
Bifenazate	0.051	0.2	<LOQ		Pass	Methiocarb	0.051	0.2	<LOQ		Pass
Bifenthrin	0.051	0.2	<LOQ		Pass	Methomyl	0.101	0.4	<LOQ		Pass
Boscalid	0.101	0.4	<LOQ		Pass	Myclobutanil	0.051	0.2	<LOQ	M2	Pass
Carbaryl	0.051	0.2	<LOQ		Pass	Naled	0.127	0.5	<LOQ		Pass
Carbofuran	0.051	0.2	<LOQ		Pass	Oxamyl	0.253	1.0	<LOQ		Pass
Chlorantraniliprole	0.051	0.2	<LOQ		Pass	Paclobutrazol	0.101	0.4	<LOQ		Pass
Chlorfenapyr	0.507	1.0	<LOQ		Pass	Permethrins	0.051	0.2	<LOQ	M2	Pass
Chlorpyrifos	0.051	0.2	<LOQ	M2	Pass	Phosmet	0.051	0.2	<LOQ		Pass
Clofentezine	0.051	0.2	<LOQ		Pass	Piperonyl butoxide	0.507	2.0	<LOQ		Pass
Cyfluthrin	0.507	1.0	<LOQ		Pass	Prallethrin	0.051	0.2	<LOQ		Pass
Cypermethrin	0.253	1.0	<LOQ		Pass	Propiconazole	0.101	0.4	<LOQ		Pass
Daminozide	0.507	1.0	<LOQ		Pass	Propoxur	0.051	0.2	<LOQ		Pass
Diazinon	0.051	0.2	<LOQ		Pass	Pyrethrins	0.162	1.0	<LOQ		Pass
Dichlorvos	0.051	0.1	<LOQ		Pass	Pyridaben	0.051	0.2	<LOQ		Pass
Dimethoate	0.051	0.2	<LOQ		Pass	Spinosad	0.051	0.2	<LOQ		Pass
Ethoprophos	0.051	0.2	<LOQ	M2	Pass	Spiromesifen	0.051	0.2	<LOQ		Pass
Etofenprox	0.101	0.4	<LOQ		Pass	Spirotetramat	0.051	0.2	<LOQ		Pass
Etoxazole	0.051	0.2	<LOQ		Pass	Spiroxamine	0.101	0.4	<LOQ		Pass
Fenoxycarb	0.051	0.2	<LOQ		Pass	Tebuconazole	0.101	0.4	<LOQ		Pass
Fenpyroximate	0.101	0.4	<LOQ		Pass	Thiacloprid	0.051	0.2	<LOQ		Pass
Fipronil	0.101	0.4	<LOQ		Pass	Thiamethoxam	0.051	0.2	<LOQ		Pass
Flonicamid	0.253	1.0	<LOQ		Pass	Trifloxystrobin	0.051	0.2	<LOQ		Pass
Fludioxonil	0.101	0.4	<LOQ		Pass						

LOQ = Limit of Quantitation; NR = Not Reported; ND = Not Detected. Unless otherwise stated all quality control samples performed within specifications established by the Laboratory. Pesticides method: LC/MS/MS.



C4 LABORATORIES

7650 E. Evans Rd, Unit A
 Scottsdale, AZ 85260
 (480) 219-6460
<http://www.c4lab.com>
 Lic.#00000005LCMI00301434

Dennis Wells
 CSO/QAM



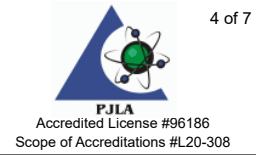
ARIZONA DEPARTMENT
 OF HEALTH SERVICES

This product has been tested by C4 Laboratories LLC using valid testing methodologies and a quality system as required by Arizona state law. Results marked as 'Pass' or 'Fail' are done so in reference to R9-17: Arizona Administrative Code (A.A.C.) Title 9, Chapter 17, May 3, 2021. Values reported relate only to the product tested as received. C4 Laboratories LLC makes no claims as to the efficacy, safety or other risks associated with any detected or non-detected levels of any compounds reported herein. Contact C4 Laboratories LLC for a technical report related to this sample. This Certificate shall not be reproduced except in full, without the written approval of C4 Laboratories LLC. AZDHS certification 00000005LCMI00301434.



Certificate of Analysis

AZDHS Certification # 05LCMI00301434



Tierra Grow Management LLC
 none
 cave creek, AZ 85331
 (480) 471-8633
 Lic#: 00000127DCSS00185167

FINAL

Sample: S111016-01
 CC ID#: 2111C4L0021.5513
 Lot#: BBW1-033121R9-10-13A
 Batch#: BBW1-033121R9-10-13A
 Batch Size: N/A

Sample Name: BBW1-033121R9-10-13A
 Strain Name: Blueberry Widow
 Matrix: Flower

Sample Received: 11/04/2021
 Report Created: 11/11/2021

Metals by ICPMS - Medical

Pass

Date Analyzed: 11/09/2021 Analyst Initials: ASJ

Analyte	LOQ	Limit	Mass	Q	Status
	ppm	ppm	ppm		
Arsenic	0.099	0.4	<LOQ		Pass
Cadmium	0.099	0.4	<LOQ		Pass
Lead	0.396	1.0	<LOQ	L1	Pass
Mercury	0.396	1.2	<LOQ		Pass

LOQ = Limit of Quantitation; ND = Not Detected. Unless otherwise stated all quality control samples performed within specifications established by the Laboratory.



C4 LABORATORIES

7650 E. Evans Rd, Unit A
 Scottsdale, AZ 85260
 (480) 219-6460
<http://www.c4lab.com>
 Lic.#00000005LCMI00301434

Dennis Wells
 CSO/QAM

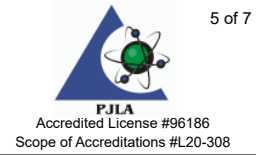


This product has been tested by C4 Laboratories LLC using valid testing methodologies and a quality system as required by Arizona state law. Results marked as 'Pass' or 'Fail' are done so in reference to R9-17: Arizona Administrative Code (A.A.C.) Title 9, Chapter 17, May 3, 2021. Values reported relate only to the product tested as received. C4 Laboratories LLC makes no claims as to the efficacy, safety or other risks associated with any detected or non-detected levels of any compounds reported herein. Contact C4 Laboratories LLC for a technical report related to this sample. This Certificate shall not be reproduced except in full, without the written approval of C4 Laboratories LLC. AZDHS certification 00000005LCMI00301434.



Certificate of Analysis

AZDHS Certification # 05LCMI00301434



Tierra Grow Management LLC
 none
 cave creek, AZ 85331
 (480) 471-8633
 Lic#: 00000127DCSS00185167

Sample: S111016-01
 CC ID#: 2111C4L0021.5513
 Lot#: BBW1-033121R9-10-13A
 Batch#: BBW1-033121R9-10-13A
 Batch Size: N/A

FINAL

Sample Name: BBW1-033121R9-10-13A
 Strain Name: Blueberry Widow
 Matrix: Flower

Sample Received: 11/04/2021
 Report Created: 11/11/2021

Microbials Pass

E. coli by 3M Petrifilm- Medical

Plate

Date Analyzed: 11/10/2021 Analyst Initials: KAM

Analyte	LOQ	Limit	Mass	Q	Status
	cfu/g	cfu/g	cfu/g		
E. coli	1.0	100	<LOQ		Pass

Notes: Aerobic plate counts and yeast and mold are provided for informational purposes only.
 LOQ = Limit of Quantitation; TNTC = Too Numerous to Count; NR = Not Reported; NT = Not Tested;
 ND = Not Detected; Unless otherwise stated all quality control samples performed within specifications established by the Laboratory. Aspergillus includes species flavus, fumigatus, niger, and terreus.
 E. coli by Petrifilm, Salmonella and Aspergillus by Medicinal Genomics.

Aspergillus and Salmonella by qPCR - Medical

qPCR

Date Analyzed: 11/10/2021 Analyst Initials: KAM

Analyte	LOQ	Limit	Mass	Q	Status
	cfu/g	cfu/g	cfu/g		
Salmonella spp.	1	1	<LOQ		Pass
Aspergillus	1	1	<LOQ		Pass

Notes: Aerobic plate counts and yeast and mold are provided for informational purposes only.
 LOQ = Limit of Quantitation; TNTC = Too Numerous to Count; NR = Not Reported; NT = Not Tested;
 ND = Not Detected; Unless otherwise stated all quality control samples performed within specifications established by the Laboratory. Aspergillus includes species flavus, fumigatus, niger, and terreus.
 E. coli by Petrifilm, Salmonella and Aspergillus by Medicinal Genomics.



C4 LABORATORIES

7650 E. Evans Rd, Unit A
 Scottsdale, AZ 85260
 (480) 219-6460
<http://www.c4lab.com>
 Lic.#00000005LCMI00301434

Dennis Wells
 CSO/QAM

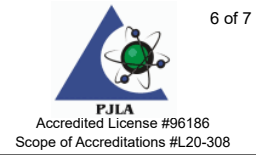


This product has been tested by C4 Laboratories LLC using valid testing methodologies and a quality system as required by Arizona state law. Results marked as 'Pass' or 'Fail' are done so in reference to R9-17: Arizona Administrative Code (A.A.C.) Title 9, Chapter 17, May 3, 2021. Values reported relate only to the product tested as received. C4 Laboratories LLC makes no claims as to the efficacy, safety or other risks associated with any detected or non-detected levels of any compounds reported herein. Contact C4 Laboratories LLC for a technical report related to this sample. This Certificate shall not be reproduced except in full, without the written approval of C4 Laboratories LLC. AZDHS certification 00000005LCMI00301434.



Certificate of Analysis

AZDHS Certification # 05LCMI00301434



Tierra Grow Management LLC
 none
 cave creek, AZ 85331
 (480) 471-8633
 Lic#: 00000127DCSS00185167

FINAL

Sample: S111016-01
 CC ID#: 2111C4L0021.5513
 Lot#: BBW1-033121R9-10-13A
 Batch#: BBW1-033121R9-10-13A
 Batch Size: N/A

Sample Name: BBW1-033121R9-10-13A
 Strain Name: Blueberry Widow
 Matrix: Flower

Sample Received: 11/04/2021
 Report Created: 11/11/2021

Notes and Definitions

Item	Definition
L1	The percent recovery of the LCS was outside of control limits for the test but analyte was not detected above the Action Limit in Table 3.1.
M2	Matrix Spike recovery was lower than control limit but recovery of the LCS was within control limits.
R3	The RPD for the sample duplicate pair could not be accurately calculated do to low analyte concentration.
ND	Analyte NOT DETECTED at or above the reporting limit.
RPD	Relative Percent Difference
%REC	Percent Recovery
Source	Sample that was matrix spiked or duplicated.



C4 LABORATORIES

7650 E. Evans Rd, Unit A
 Scottsdale, AZ 85260
 (480) 219-6460
<http://www.c4lab.com>
 Lic.#00000005LCMI00301434

Dennis Wells
 CSO/QAM



This product has been tested by C4 Laboratories LLC using valid testing methodologies and a quality system as required by Arizona state law. Results marked as 'Pass' or 'Fail' are done so in reference to R9-17: Arizona Administrative Code (A.A.C.) Title 9, Chapter 17, May 3, 2021. Values reported relate only to the product tested as received. C4 Laboratories LLC makes no claims as to the efficacy, safety or other risks associated with any detected or non-detected levels of any compounds reported herein. Contact C4 Laboratories LLC for a technical report related to this sample. This Certificate shall not be reproduced except in full, without the written approval of C4 Laboratories LLC. AZDHS certification 00000005LCMI00301434.

Empty PDFFilePath marker encountered